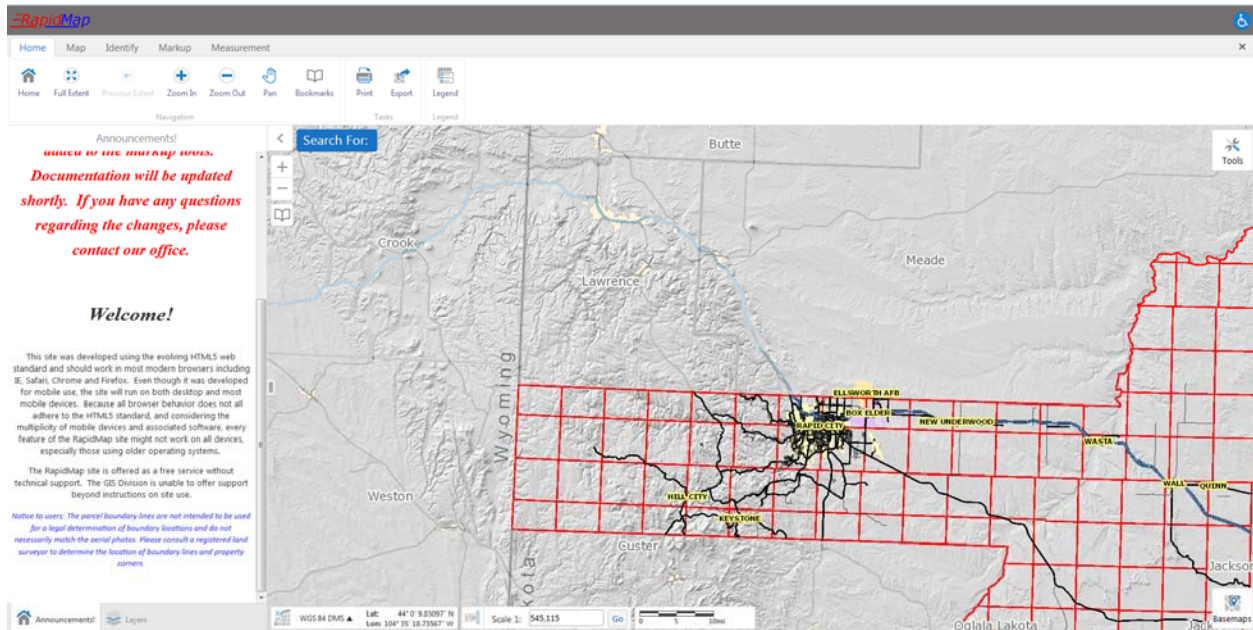


RAPIDMAP

Geocortex HTML5 Viewer Manual



This site was developed using the evolving HTML5 web standard and should work in most modern browsers including IE, Safari, Chrome and Firefox. Even though it was developed for mobile use, the site will run on both desktop and mobile devices. Because all browser behavior does not all adhere to the HTML5 standard, and considering the multiplicity of mobile devices and associated software, every feature of the RapidMap site might not work on all devices, especially those using older operating systems.

The RapidMap site is offered as a free service without technical support. The GIS Division is unable to offer support beyond instructions on site use.

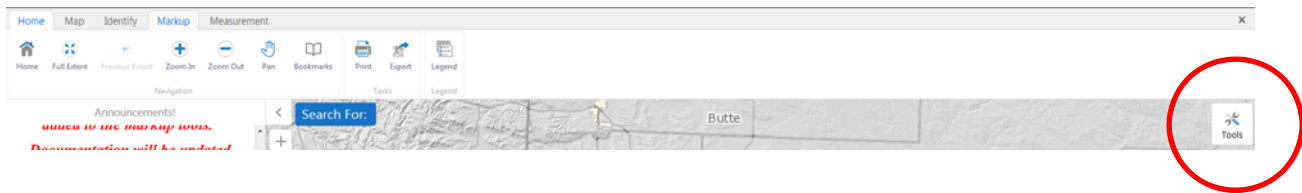
The most common issues users will have when using the site is a pop up blocker. Any link external to the viewer requires a new window to be opened. This includes any hyperlinks, maps or reports. The new window will fail to open without giving the user an error. Please refer to your browser help for instructions on how to turn off the pop up blocker.

Getting Started

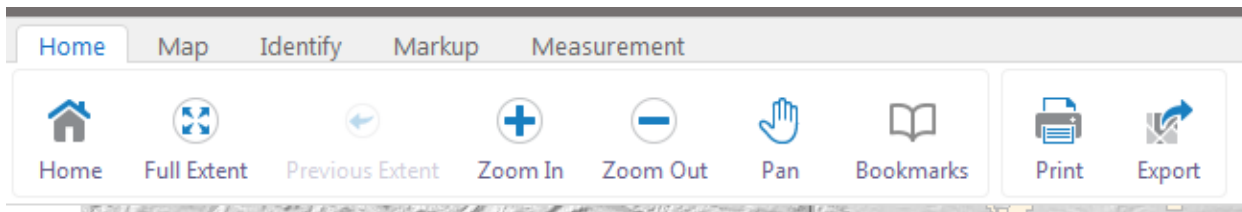
When the map first loads, the pan tool is active. If you have a mouse with a scroll wheel, place the cursor anywhere on the map and use the wheel to quickly zoom in and out. The location of the cursor will be the center point of the zoom. When using most tools, you can hold down the left mouse button and pan the map.


Viewer Tools

The toolbar region is open by default. To close the toolbar region, click on the 'X' located on the far right of the toolbar. Click on the 'Tools' icon in the upper right of the map to open up the tools. The tools region is separated into tabs which are discussed below.





Getting Around Tools (Home tab)





 **Home** This will open a panel on the left side of the map; the home panel contains the Rapid City-Pennington County GIS Division data disclaimer. This area can also serve as an announcement page for upcoming changes or downtimes.


 **Full Extent** Full Extent zooms the display to the full extent of the map.

 **Previous Extent** Previous Extent moves the display to the previous location and zoom level of the map.

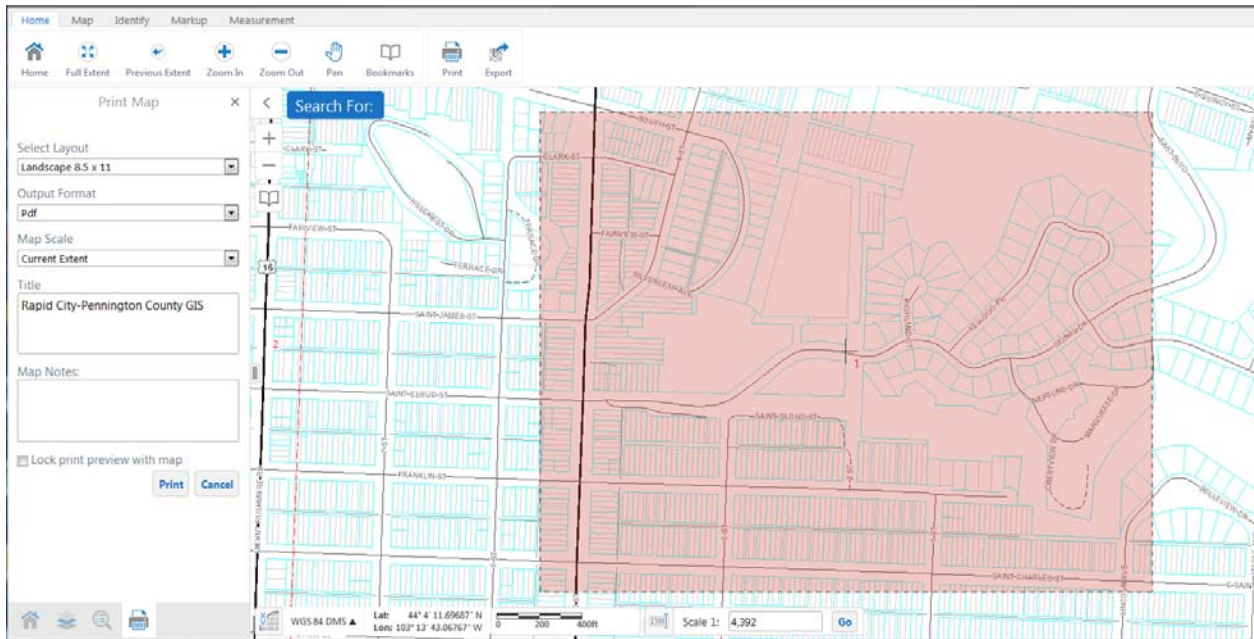
 **Zoom In/Zoom out** allows you to zoom in and out by drawing a box on the map.

 **Pan** allows you to click and drag the map around. This tool is active by default.

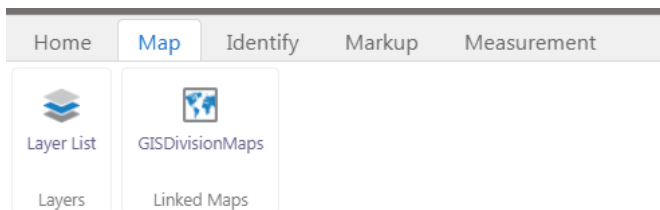
 **Bookmarks** allow you to jump to a predefined map extent from the dropdown menu or to create your own bookmarks of any map extent.

 **Print** allows you to create a pdf file suitable for printing with legend and disclaimer. **Export** creates an image of what is showing on the map; it does not contain a legend.

When the print button is clicked, you can choose the Layout from two options. The Output Format is set to pdf. Set the Map Scale to either the current extent or you can use the current scale, which is listed at the bottom of the map. There are also options to change the Title and add Map Notes. At the bottom is a Lock print preview with map option, which is checked by default. If you zoom out slightly on the map it will show the bounding box that is currently set to print. Unchecking the lock print preview allows you to shift the map so that the print is set exactly to the area you want. The screen below shows what the print preview looks like.



Map Tab



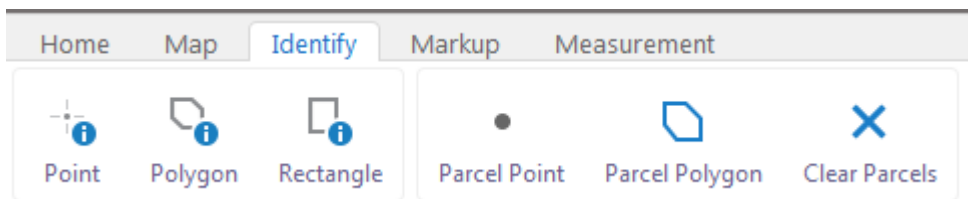
Opens the map layers panel to turn on/off map layers.



GISDivisionMaps

Opens the GIS Division's webpage with additional pdf maps that you download and print.

Identify Tab



Point

Identify data at a particular point anywhere on the map. Any layer that is currently visible directly beneath the point will be listed in the results pane on the left side of the map.

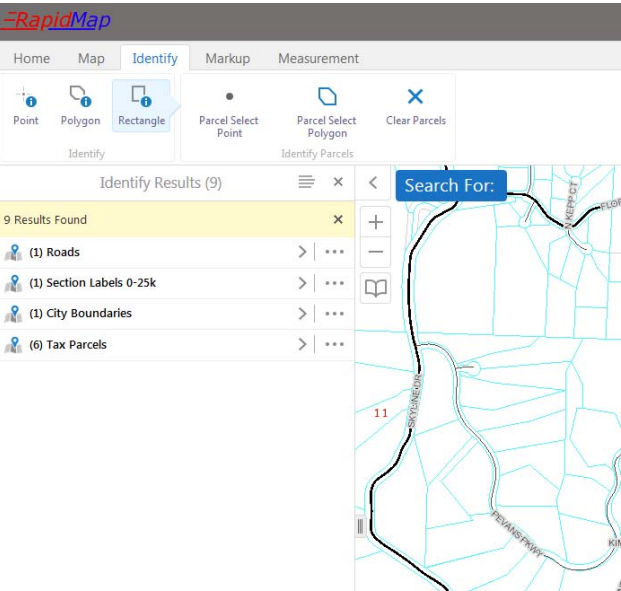


Polygon Identify data by drawing a segmented shape over an area on the map. Any layer that is currently visible beneath the polygon will be listed in the results pane on the left side of the map.

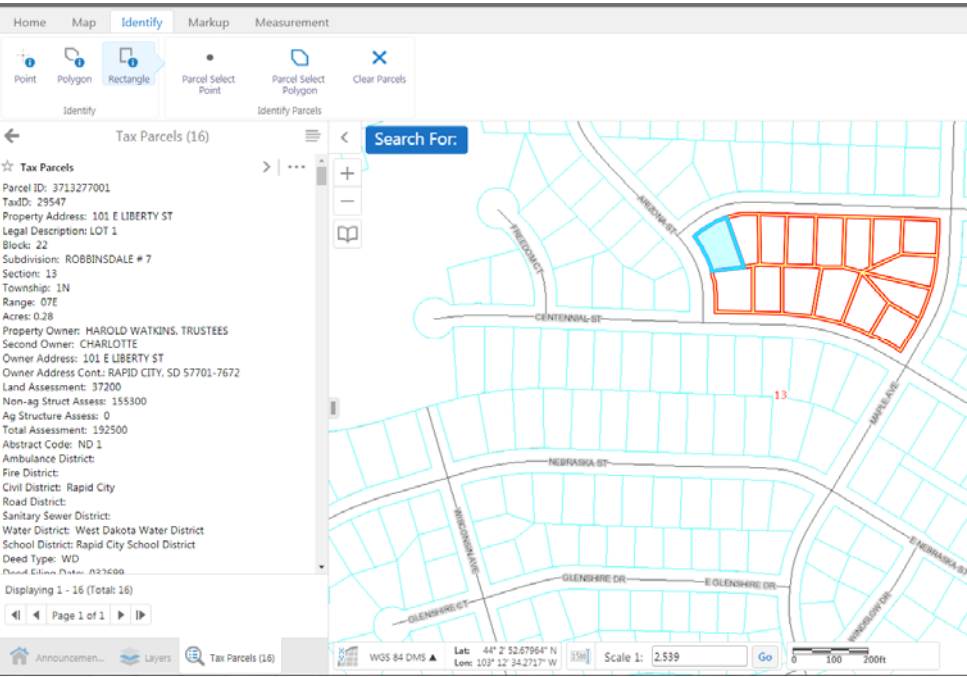


Rectangle Identify data by drawing a rectangle over an area on the map. Any layer that is currently visible beneath the rectangle will be listed in the results pane on the left side of the map.

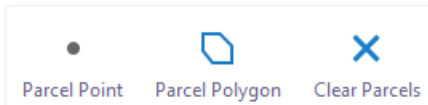
When you first identify a feature or features, below is what you will see in the results panel on the left side of the screen.



All results are grouped so you don't have to scroll through everything to find the information you are looking for. Just click on the carrot symbol (>) for the result you are looking for and it will highlight all those features and present the information in the results panel. See below image.

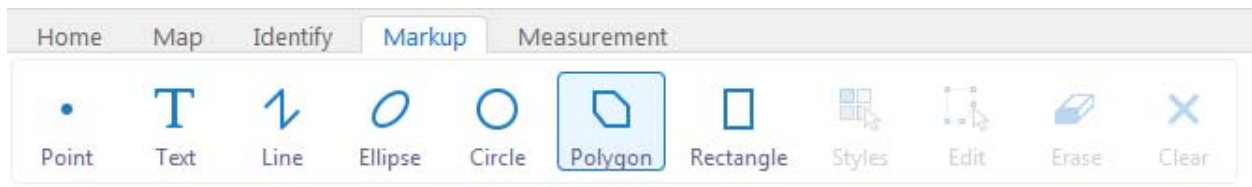


In the image above shows I have 16 parcels identified. All 16 are outlined on the map. The one parcel is blue because my mouse cursor is hovering over that result in the results panel. If you scroll through the results and hover the cursor over the result, the map will change to show which parcel you are currently hovering over. If you move your cursor out of the results panel than all results will just show up in an outline. To remove the outlining, just click on the back arrow at the top of the results panel.



These 3 buttons work only with parcels - they have been designed to identify parcels and highlight them on the map. Parcel point will identify a single parcel where the map is clicked. Parcel polygon will identify parcels by drawing a segmented shape over an area on the map. To add more parcels to the already identified parcels, click on the tool again. To clear all parcel results and all parcels highlighted on the map, click on the Clear Parcels button.

Markup Tab



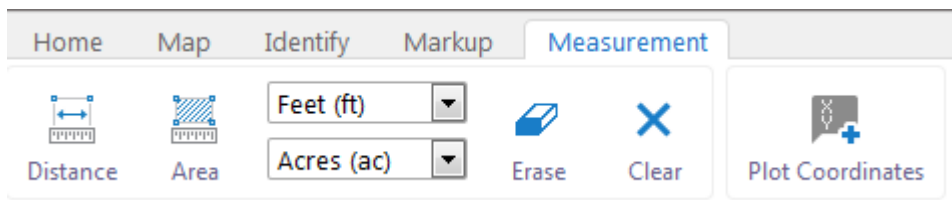
With each of the above tools, click on the button to activate it, then click the styles button to select color, line style, symbol shape, etc. Click the drawing tool you want or the text and then click on Styles. By default it will give you a few options to choose from. You have the option to change the Type of Style to 'Create your own Style'. That will change the options for you. After you select everything you want, click done and then you want to place your drawing or text on the map.

Click on the Edit button to edit any existing drawing or text on the map. Click on the markup to increase or decrease size, rotate or grab the markup and move its position. You can also change the style of the markup. To save any changes, click anywhere on the map other than on the markup.

Click on Erase to remove a single markup or text. Click the button to activate it and then click on the markup you wish to remove.

Click on the Clear button to remove all markups.

Measurement Tab



Distance Draws a straight line on the map to display distance. Click to activate tool, then single click to start the line and for each new segment, and double click to end the line. The total length of the line will be displayed on the map along with the length of each segment. Unit default is set to Feet but can be

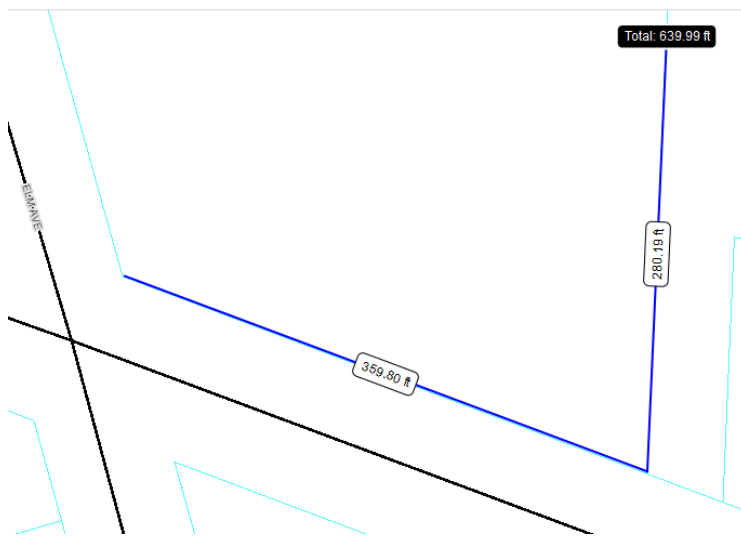
changed on the fly by selecting the upper drop down box and choosing the unit of measurement you want.



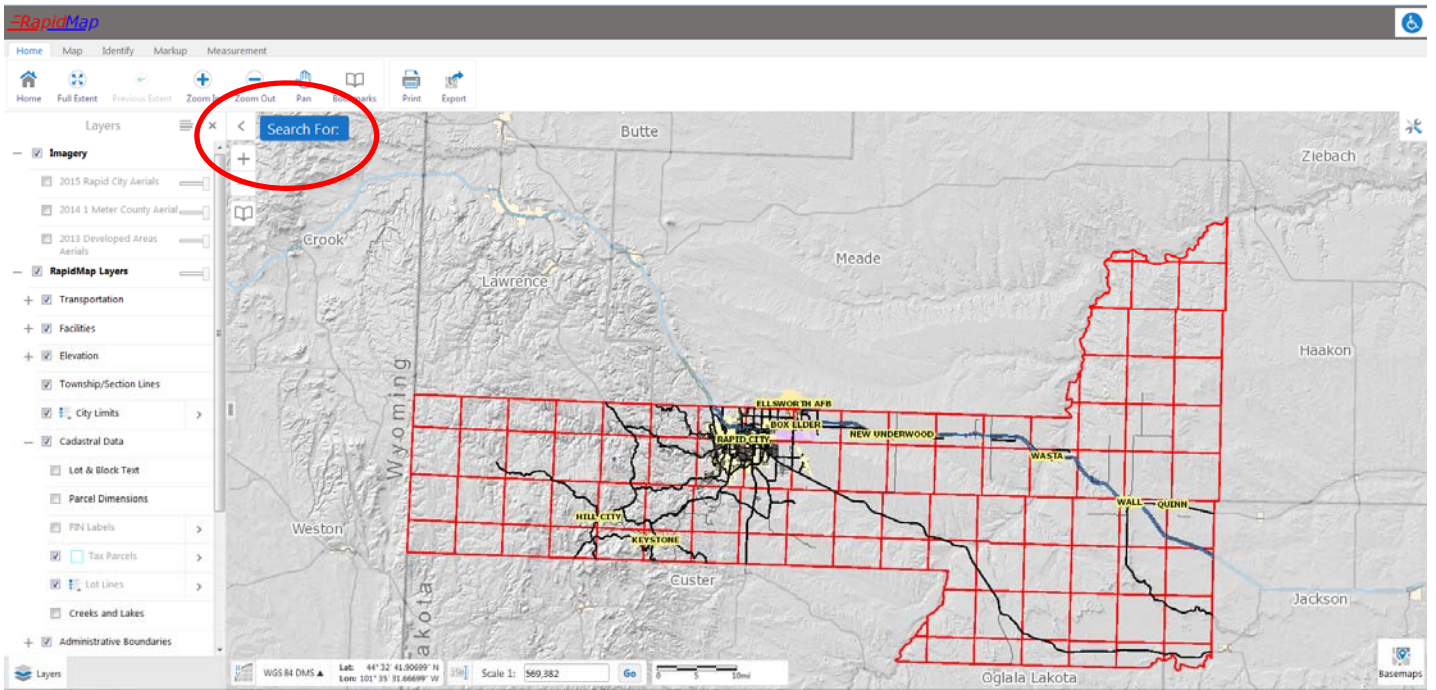
Draws a polygon on the map to display length of each line and the total area of the polygon. Click to activate tool, then single click to start polygon and to add additional points to shape the polygon, then double click to end. The length of each line segment will be displayed along with the area. Area default unit is set to Acres. Length and Area units can be changed using the two drop down boxes on the toolbar.

Click on Erase to remove an individual line or polygon. Click to activate then click on the drawing you want to remove.

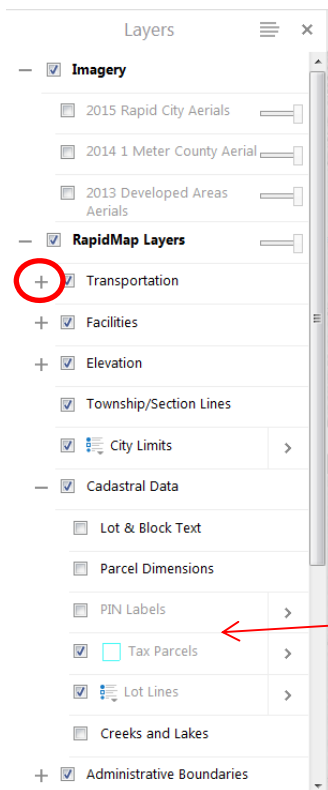
Click on Clear to remove all drawings.



Plot Coordinates allows you to click on the map to get coordinates or to enter coordinates and have it show up as a location on the map. There are 2 coordinate systems to choose from, WGS84 and NAD83/2011 South Dakota State Plane South. WGS 84 is what most GPS receivers display, showing some form of latitude and longitude. Coordinates can be displayed in Decimal Degrees (DD), Degrees-Decimal Minutes (DDM) or Degrees-Minutes-Seconds (DMS). NAD83/2011 South Dakota State Plane South can be displayed in X/Y which equates to eastings and northings. The default coordinate display is WGS84 DMS.

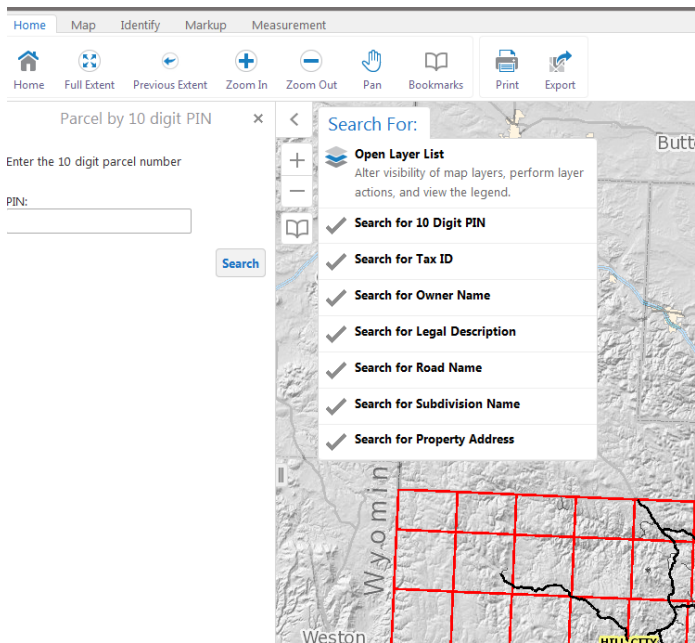


The arrow button to the left of the Search For button will open up the list of available map layers. With the list open, click on the plus icon to open up each category to see the individual layers. Layers that are grayed out indicate the map is not at the proper scale for that layer to be viewed. Zoom in or out until the layer is no longer grayed out.

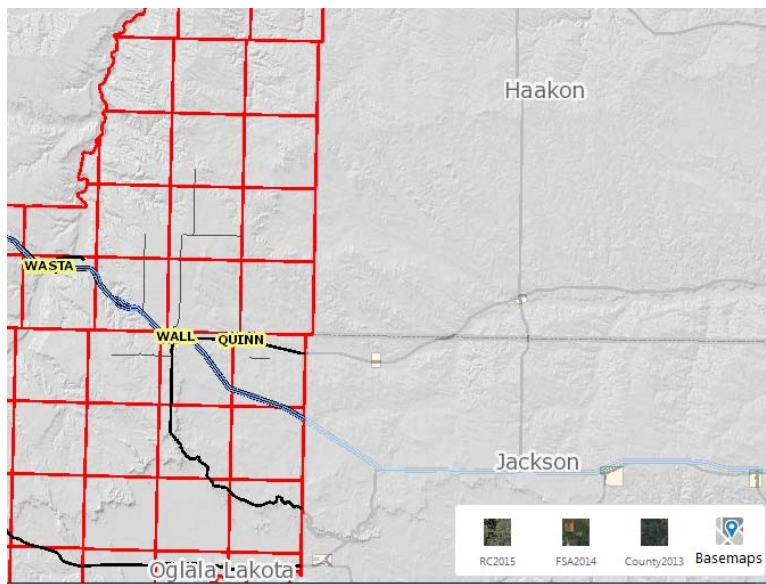


Map not at proper scale to view these layers

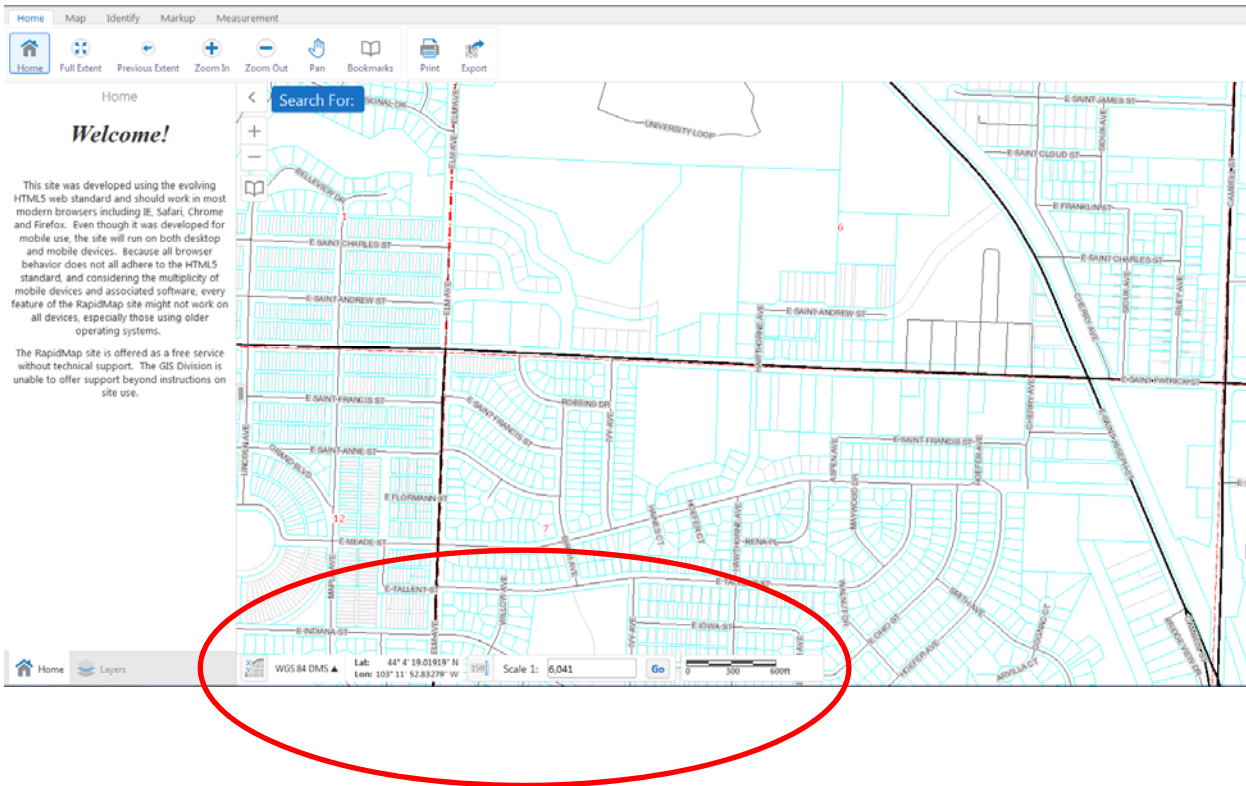
Search For button. Clicking on this button will show the available searches. Click the search you want and it will appear in the left side panel. For each search, enter the information and click on Search. If there are results, they will show up in the results panel. Click on the result to zoom to it on the map. Some searches may return more than one result.



In the bottom right hand corner of the map is a button called Basemaps. Clicking on this will open up a panel with the available imagery. Imagery will only show on the map when you are at the proper scale. Click on the image you want to see. Imagery can be turned off within the layer list panel. Note that some imagery does not cover the full extent of the county.

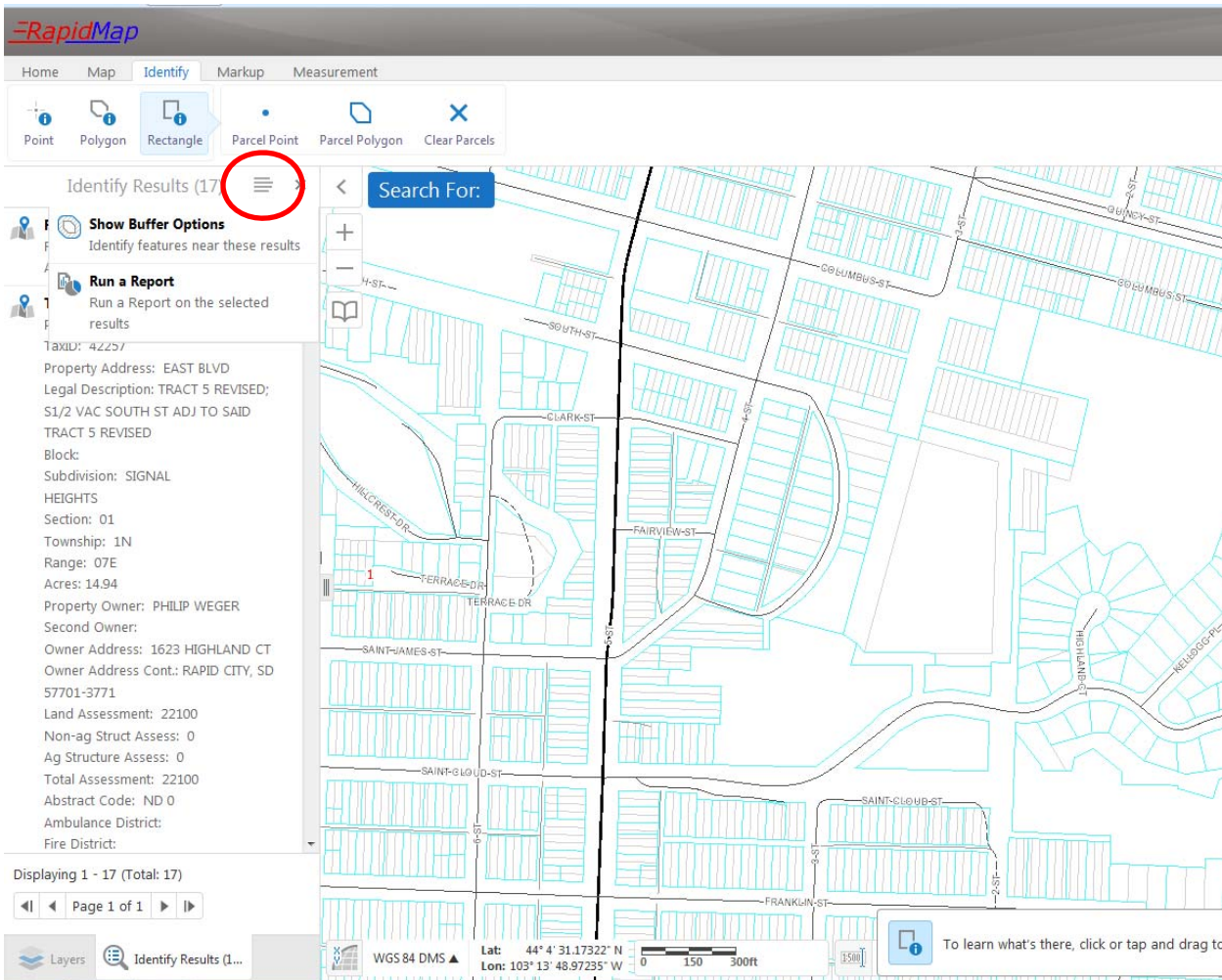


Along the bottom of the map is coordinate information. The default display is WGS 84 DMS. The coordinates constantly update as the mouse moves around the map. To the right of the coordinate display are 2 scales - the scale bar and a scale input box. You can input a scale of your own in the input scale box.



Reports

There are 3 reports available. The reports are built to run against the parcel layer. When a user identifies a parcel(s) the results show up in a panel on the left side of the screen. On the very top of the identify results panel is an icon that looks like the one circled in the image below. Click on that and a drop down list will appear. IF parcels have been identified then Run a Report will be an option.



Click on Run a Report. The 4 options are parcel report, information report and mailing labels in both PDF and Word format. The first 2 will push the report out to a PDF. The mailing labels will push out to RTF, which can open up in Microsoft Word. The second mailing label option will push out to a PDF.

